

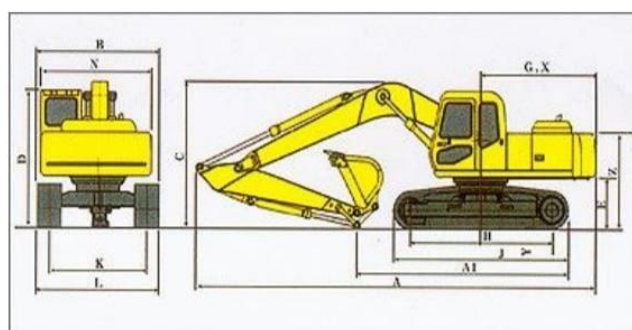
## MACAO CT160



## SPECIFICATION

Model	Unit	TW160
Weight	(T)	16
Bucket capacity	(m <sup>3</sup> )	0.56-0.8
Engine model		CUMMINS QSF3.8T3TC140
Power	(kw/r/min)	104/2050
Fuel tank capacity	(L)	245
Travel speed	(km/h)	5.2/3.5
Slewing speed	(r/min)	12.1
Grade ability	(%)	70
Bucket digging force	(KN)	80
Ground pressure	(KPa)	40.5
Hydraulic pump		KYB
Hydraulic valve		KYB
Swing motor		KYB
Max. flow	(L/min)	128*2
Work pressure	(MPa)	34.3
Hydraulic tank volume	(L)	130

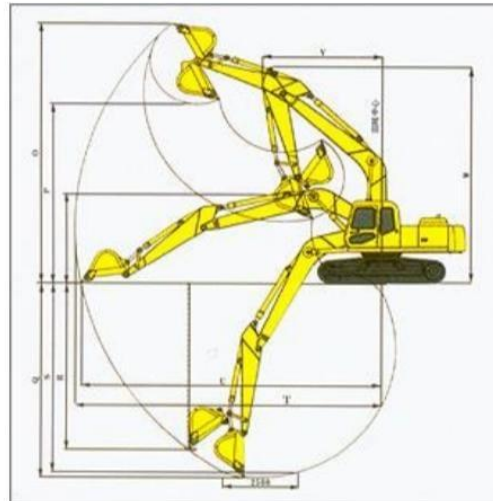
## Dimension



Overall length	(mm)	7680
Overall width	(mm)	2490
Overall height	(mm)	2780
Overall height	(mm)	2813
Ground clearance (counterweight)	(mm)	870
Min.ground clearance	(mm)	433
Tail slewing radius	(mm)	2015

Ground contact length of track	(mm)	2890
Track length	(mm)	3620
Track gauge	(mm)	1960
Track width	(mm)	2600
Track plate width	(mm)	500
Width of rotary table	(mm)	2490

## Operation Scope



Max.digging height	(mm)	8360
Max.dump height	(mm)	6180
Max.digging depth	(mm)	5500
Max.vertical digging depth	(mm)	4960
Max.digging depth when digging a 2.5m surface	(mm)	5285
Max.digging distance	(mm)	8300
Max.digging distance on ground	(mm)	8150
Min.slewing radius	(mm)	2495
Max.height at min.slewing radius	(mm)	6630
slewing center to rear end	(mm)	2205
Grouser thickness	(mm)	26
Counterweight height	(mm)	2075
Ground contact length(transport)	(mm)	4560
Arm length	(mm)	2500
Boom length	(mm)	4600

## Feature:

1. Special design on separating engine and radiation space, using enhanced cooling fan to The new originally imported Cummins engine is safe and environmental consideration, featuring strong power, easy maintenance, low fuel consumption, and low noise.
2. The advanced turbo charging engine has sufficient power reserve and it can maximally bring the engine into full play and reduce power loss.
3. The reasonable machine structure and scientific allocation, and rigid working device ensure long-term stable work. More than 97% of the excavator parts can be recycled, and the whole machine and all the wires are lead-free; the radiator and oil cooler is made of aluminum.
4. The machine can be applicable to various kinds of work conditions, and it can be easily mounted with different attachments. It can reach the maximal work efficiency under various work conditions.

